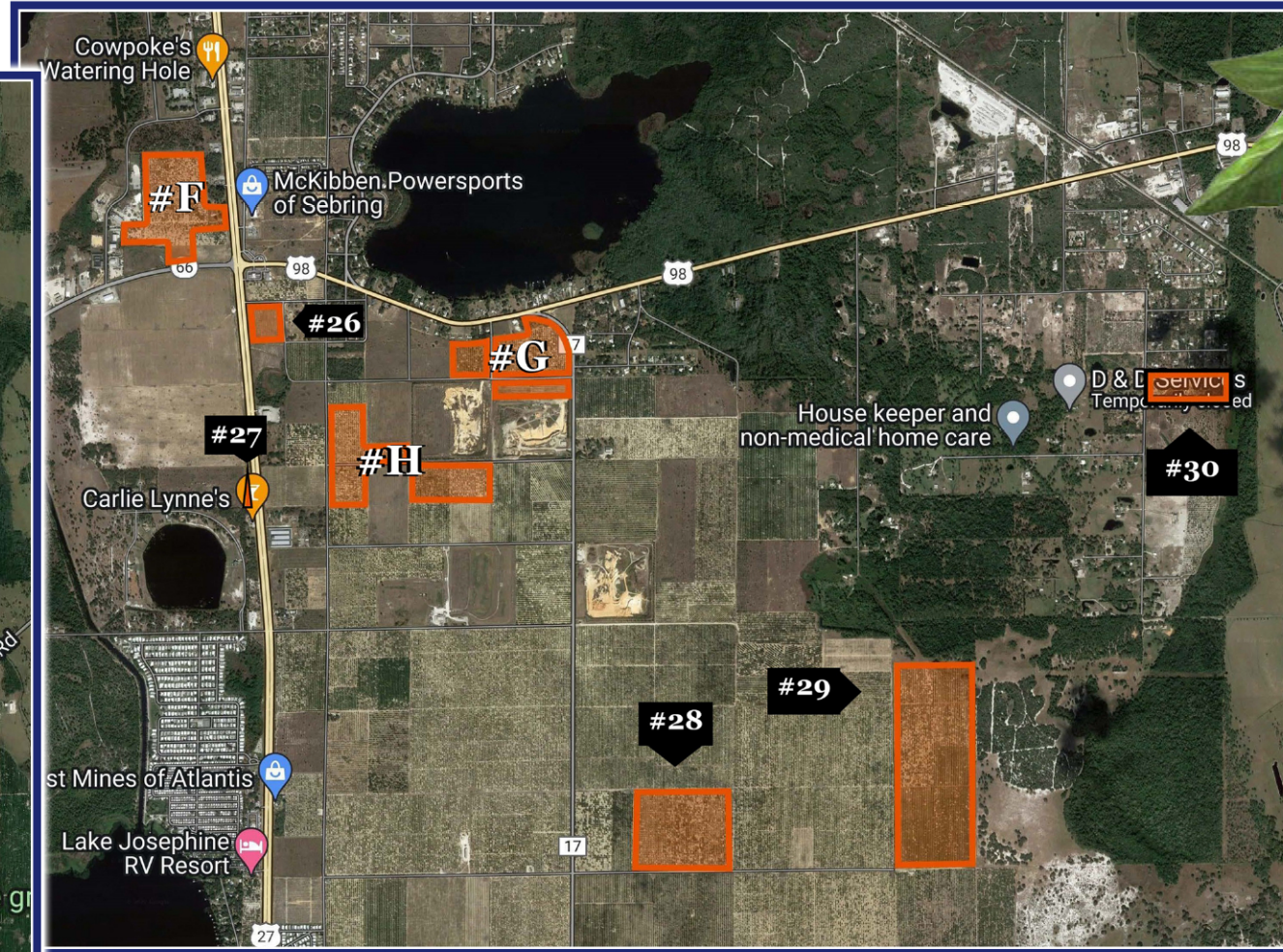
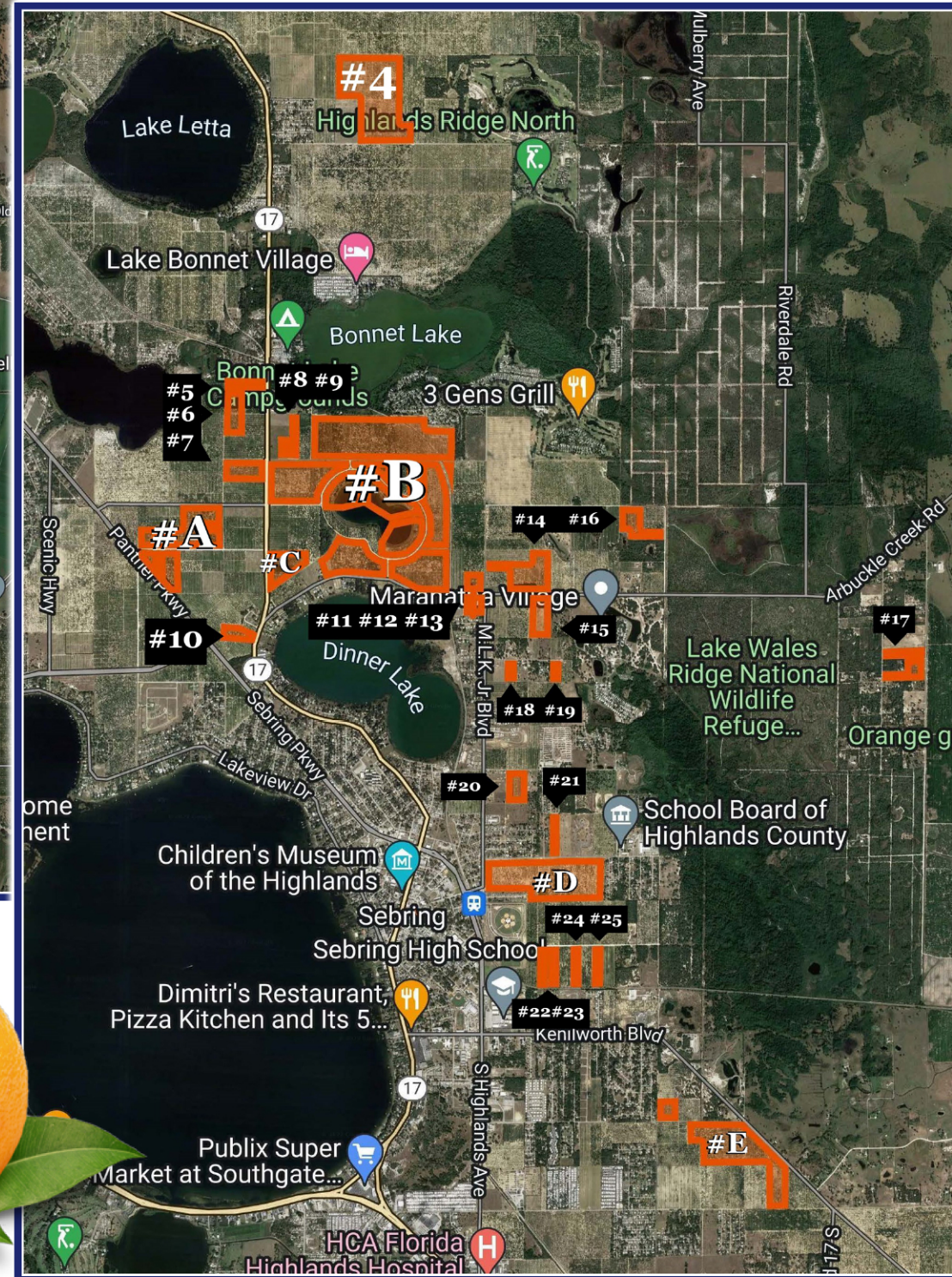
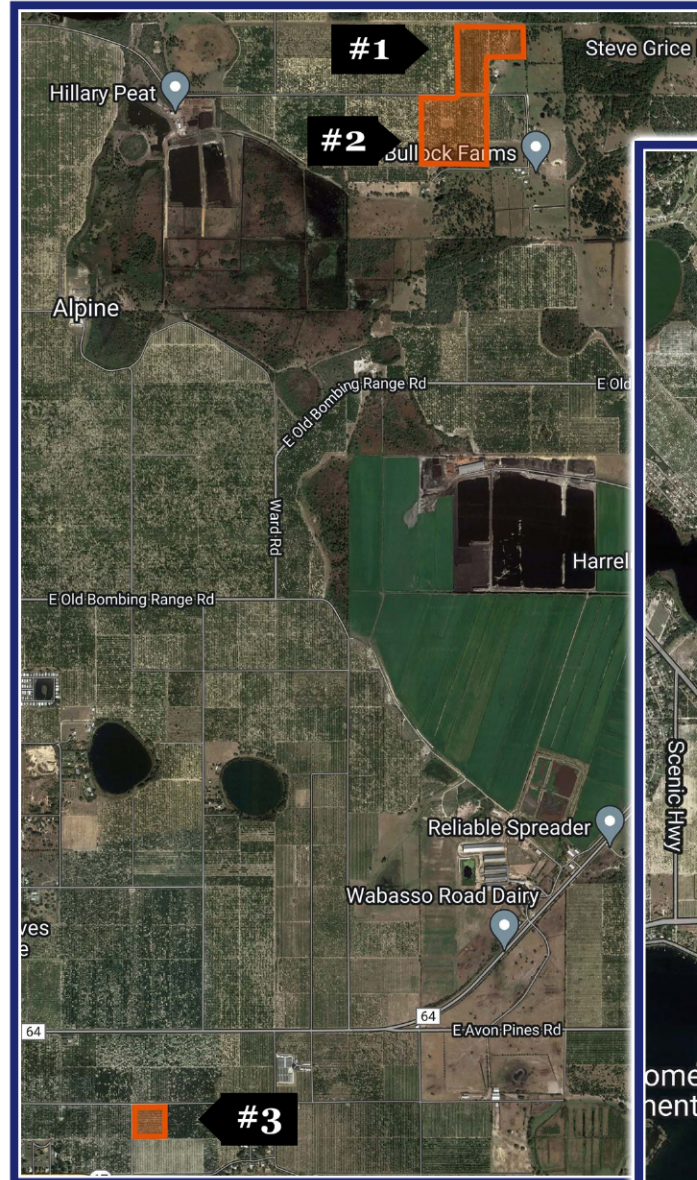


CRUTCHFIELD ESTATE DISTRIBUTION AUCTION • AUCTION: 10 AM, SATURDAY, AUGUST 27TH

1,483± Total Acres In 74 Lots • Highlands County, FL
Lots Ranging from 1 Acre to 100 Acres



The assembled properties of 4 generations of the Crutchfield families will be sold at auction. This entails 1,483± acres in 74 parcels including lakefront, commercial, residential and grove parcels all located on the ridge of Avon Park & Sebring in Highlands County, FL. Many of these Properties will be Sold Absolute!

Henry Crutchfield moved to Highlands County, FL as a young child and began working in the citrus industry in 1930. By 1939, Crutchfield decided to go into business for himself when he bought property from Sebring Groves. His success continued as he bought one grove at a time around Highlands County. The Crutchfield family went on to own and manage 3,000 acres of groves. The upcoming real estate auction on Saturday, August 27th at 10:00am will include the sale of 1,483± total acres, comprised of 74 lots, all located in Highlands County, FL. The parcels include lakefront, commercial, residential and grove parcels all located on the ridge of Avon Park & Sebring in Highlands County, FL.

Auction Location:
The Circle Theatre,
202 Circle Park Dr.,
Sebring, FL 33870
Online Bidding on Proxibid
Property Preview:
2 PM, Sun., Aug. 21st
2745 Arbuckle Creek Rd., Sebring

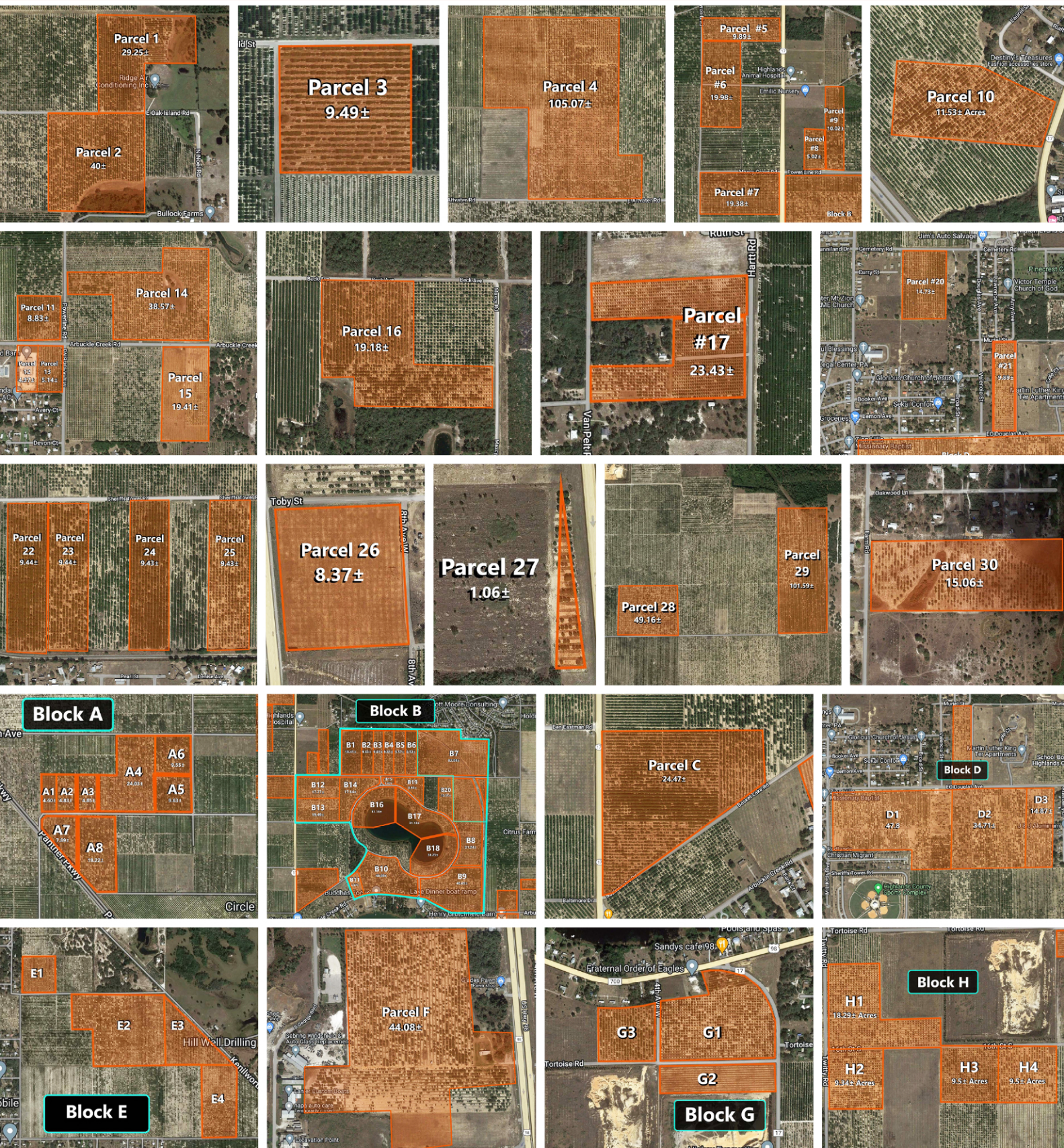
Visit our website for complete Property List!

auCTION@higgenbotham.com

HIGGENBOTHAM.COM • 800-257-4161



1,483± Acres In 74 Lots • Highlands County, FL



Visit our website for a complete Property List:

HIGGENBOTHAM.COM



Higgenbotham Auctioneers Int., Ltd., Inc.
1629 Shepherd Rd.
Lakeland, FL 33811
Toll-free: 800-257-4161
Phone: 863-644-6681
Fax: 863-644-6686
www.higgenbotham.com
"The name that sells!"

PRESORTED
FIRST CLASS MAIL
U.S. POSTAGE
PAID
PERMIT NO.1
LAKELAND, FL

FIRST CLASS MAIL

CRUTCHFIELD ESTATE DISTRIBUTION AUCTION

1,483± Total Acres In 74 Lots

Highlands County, FL

Live Auction: 10 AM, Sat., Aug. 27th

Online Bidding on Proxibid Available!

Crutchfield Estate Distribution Auction

1,483± Total Acres In 74 Lots • Highlands County, FL

The assembled properties of 4 generations of the Crutchfield families are selling at auction on August 27th at The Circle Theatre, Sebring, FL
Many will be Sold Absolute!



- Properties include lakefronts, commercial, residential and grove parcels
- All located on the ridge of Avon Park & Sebring in Highlands County, Florida

Real Estate Terms: 10% Deposit Due Day Of Sale. Balance Due At Closing On, Or Before 60 Days. 10% Buyers Premium. *Pre-auction offers are considered. Subject to pre-auction sale, change or withdrawal without notice. Internet Bidding: \$1,000 credit card hold at time of registration. 11% Buyers Premium. Winning bidder will be required to wire a 10% deposit on Monday, August 29th and execute & return the purchase & sale agreement that will be emailed to them. Balance will be due in 60 days at closing. Telephone Bidding: Phone Bidding Available. Pre-Registration Required At Least 48 Hours In Advance. Disclosure: Buyers shall rely on their own information, judgement, and inspection of the property and records. All announcements from the Auction block take precedence over any printed or advertised material. This property will be sold subject to any applicable Federal, State, and/or Local Government Regulations. All acreages, measurement, & other figures described in this brochure are approximate and therefore not necessarily to scale. All properties sold AS IS, WHERE IS. Not responsible for accidents or injuries. All properties subject to sale prior to auction. 220827 M.E. Higgenbotham, CAI, CES, AARE FL Lic. #AU305 AB158.

HIGGENBOTHAM.COM • 800-257-4161

M.E. Higgenbotham, CAI, CES, AARE FL Lic. #AU305 AB158



CRUTCHFIELD ESTATE DISTRIBUTION AUCTION

1,483± Total Acres In 74 Lots

Auction: 10 AM, Saturday, August 27th

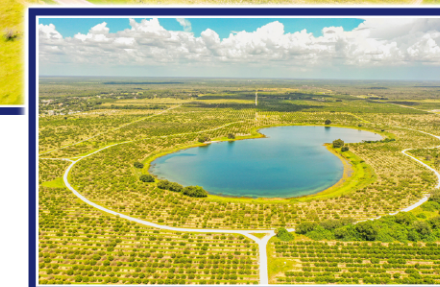
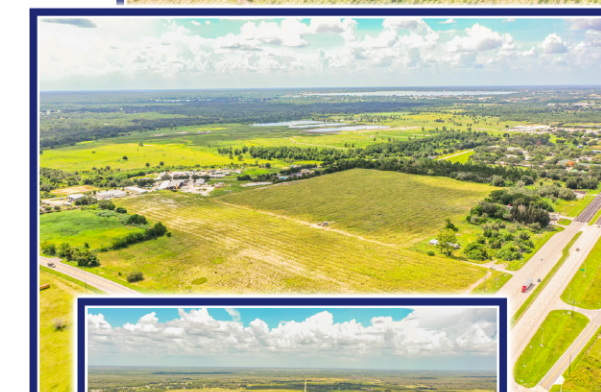
Auction Location: The Circle Theatre, Sebring, FL 33870

Online Bidding on Proxibid

Preview: 2 PM, Sunday, August 21st at 2745 Arbuckle Creek Rd., Sebring

- Includes Lakefronts, Commercial, Residential and Grove parcels
- All located on the ridge of Avon Park & Sebring in Highlands County, FL

Many of these Properties will be Sold Absolute!



The assembled properties of 4 generations of the Crutchfield families



auction@higgenbotham.com
HIGGENBOTHAM.COM • 800-257-4161